

Villa Gardenia

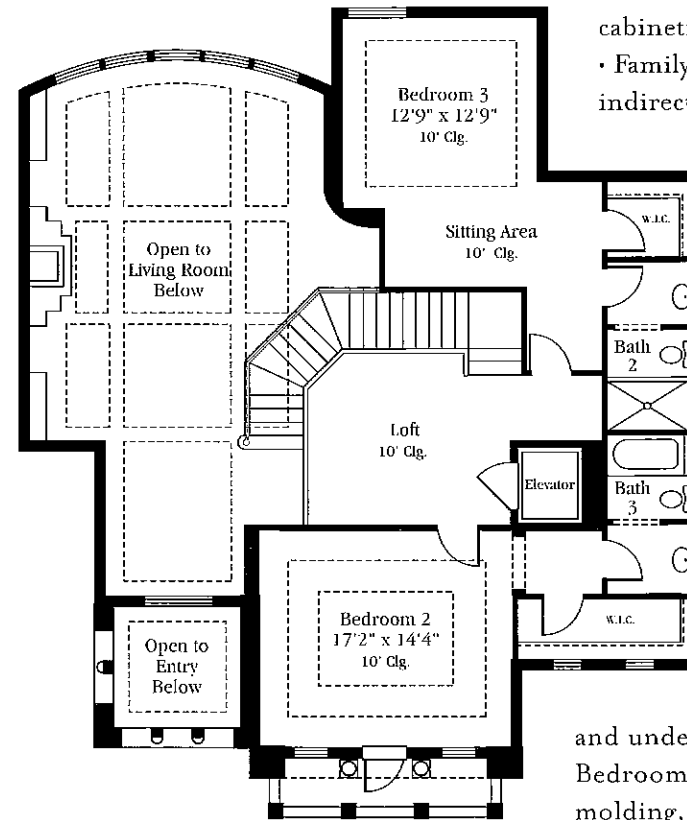
First Floor Living Area	4,302 Sq. Ft.
Second Floor Living Area	1,058 Sq. Ft.
Entry	95 Sq. Ft.
Lanai	1,374 Sq. Ft.
Three Car Garage	790 Sq. Ft.
Total Area	7,619 Sq. Ft.

Home Features:

Foyer- custom Mahogany entry doors with glass and iron overlay, chiseled-edge Travertine flooring and stepped ceiling with crown molding • Living Room- chiseled-edge Travertine flooring, coffered ceiling with crown molding, wet bar with granite top and dramatic Keystone fireplace with built-ins • Dining Room- polished marble flooring with inset tumbled marble and chiseled-edge travertine and French doors with sidelights overlooking the lanai • Kitchen- generous center island, Giallo Ornamentale granite countertops, solid wood cabinetry, Wolfe Sub Zero appliance package including a 36" gas cook top and a 42" refrigerator, dishwasher, refrigerated drawer, microwave and (2)ovens, undermounted stainless steel sink and veggie sink and windows overlooking a private garden

- Wet Bar- Amarillo St. Barbara granite countertops, solid wood cabinetry and under-mounted sink and undercounter refrigeration
- Family Room- chiseled-edge travertine flooring, tray ceiling with indirect lighting, large custom stained wood entertainment built-in

- with lit shelves and storage and zero-corner sliding glass doors opening onto the covered lanai • Study- stained French doors, Caribbean walnut hardwood flooring, custom stained wood built-in with shelving, files and storage and stepped ceiling with crown molding
- Master Bath- Breccia Oniciata and Italian Cream Marble flooring, solid wood cabinetry, Breccia Oniciata countertops, his and hers vanities with additional seated vanity for her, separate his and hers water closets, jetted Jacuzzi tub, large walk-in shower wrapped in Breccia Oniciata and Italian Cream Marble, stepped ceiling treatment with crown molding • Master Morning Bar- Breccia Oniciata and Italian Cream Marble flooring, solid wood cabinetry with full extension glides, dovetailed drawers and stained maple doors and drawer fronts, Breccia Oniciata countertops, under mounted sink



- and under-counter refrigeration • Master Bedroom- spacious Master Bedroom with sitting area, stepped ceiling treatment with crown molding, French doors opening to a covered lanai and overlooking the pool and separate His and Hers walk-in closets with closet systems

- including dressers with Crema Marfil Marble tops and copious hanging space • Guest Suites- (2) full guest suites including a full bath and walk-in closet • Outdoor Kitchen with Amarillo St. Barbara granite countertops, Wolfe Sub Zero appliance package including a 36" gas cook top and an under counter refrigerator, under-mounted stainless steel sink • Covered Lanai- Chiseled edge travertine flooring with coffered stucco ceiling